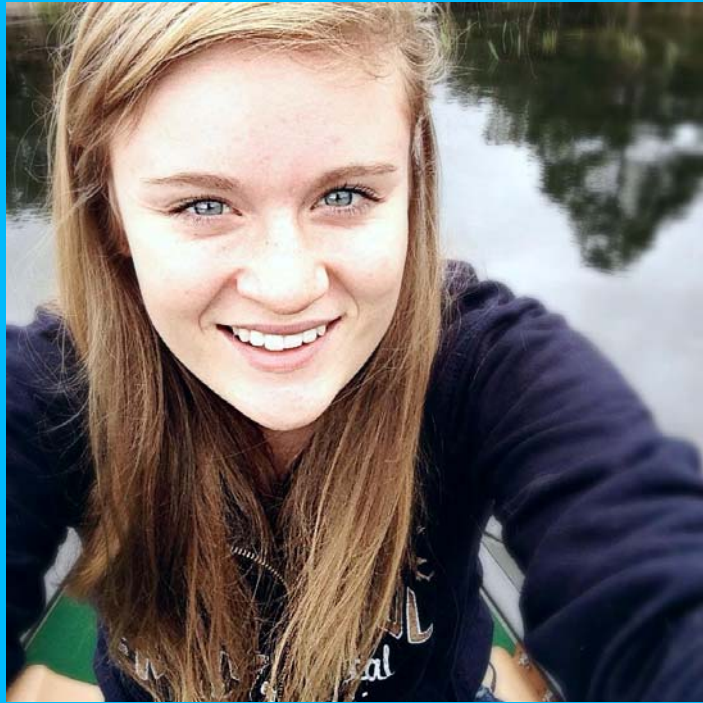


Come out and support a fellow ERAU

Hope For Hayley 5K



☀ Hayley Lewis, a member of the women's cross-country team and Tri Sigma, suffered a traumatic brain injury over the summer while riding a 4-wheeler. This 5k is to help raise money for her and her family so she can return to Embry-Riddle Fall '15

When:

November 2nd, 2014

SIGN IN: 5pm

RACE TIME: 6pm

Where:

The Embry-Riddle Track and Field

Registration:

Registration is \$25

Group rates also available

A registration booth will be set up in the UC from Monday October 27th to Friday October 31st from 10am-2pm



For more information please contact Rebecca Love @ (716) 880-4936 or rloveruns@gmail.com or Coach Mike Rosolino at (386) 323-5008.